

Installation-Instruction B-DAB-760-REV

Revision kit for Revox B760

Version 1.1

This document explains step by step how to install the B-DAB-760-REV revision kit for the Revox B760.

Principle

Many parts in the B760 are still in good condition even after many years. However, some parts age or are known from experience to be defective. This revision kit therefore contains the usual components to make the B760 fit for the DAB conversion kit. This revision kit is therefore intended exclusively for the DAB conversion of the B760 and contains only those components that are still relevant after the conversion to DAB. The conversion kit is NOT generally suitable for a B760 that is not converted to DAB!

The conversion kit contains the components required to completely overhaul the power supply unit and the audio section. These are all electrolytic capacitors, the relay, the rectifier and the miniature fuses. Also included are the mains interference suppression capacitor and all 6 bulbs for the lighting and signal lamps.

Time required

For an experienced electronics technician, you can expect it to take around 60-75 minutes to install all the components, including opening and closing the device and the final test.

Important !

This revision kit may only be installed by specialists who have in-depth knowledge of electronics. For laymen, the installation can usually not be accomplished in a compliant manner. In addition, the B760 will only function correctly with the technically correct procedure.

If you are unable to fulfill the requirements below or do not wish to install the revision kit by yourself for other reasons, please contact Sumatronic AG or Lost Audio GmbH. You will receive a recommendation as to who can carry out the installation for you.

Prerequisites:

- You are familiar with the handling of electronic components and assemblies and are particularly well versed in the subject of ESD (Electro Static Discharge).
- You have an appropriately equipped workplace and can thus ensure that the ESD specifications remain complied with.
- Among other things, they have the following tools at their disposal:
 - Soldering iron for electronic soldering work on printed circuit boards with ESD connection.
 - ESD work pad and wrist strap

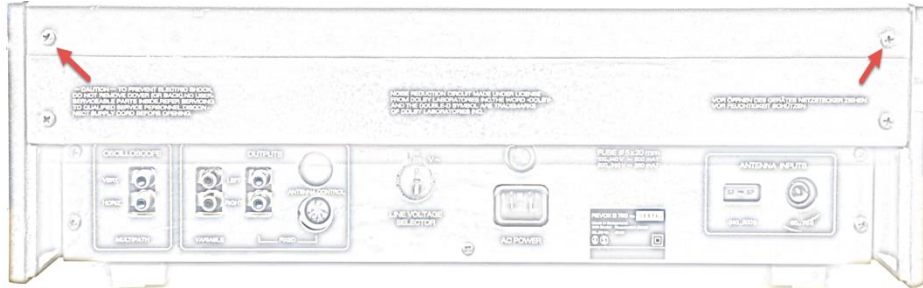
Basic safety instructions

- Unplug the power cord and wait at least 10 minutes before starting your work.
- NEVER leave the opened device alone with the power cord plugged in, otherwise another person, or even yourself, could suffer life-threatening injuries.
- Read this manual and the safety instructions completely and do not connect the unit to the power supply until the manual tells you to do so.
- Any liability is excluded.
- Any warranty claim that may still exist for the device (e.g. after an overhaul or repair) may be voided by the installation. Because these devices have not been manufactured for many years, there is usually no longer any factory warranty.

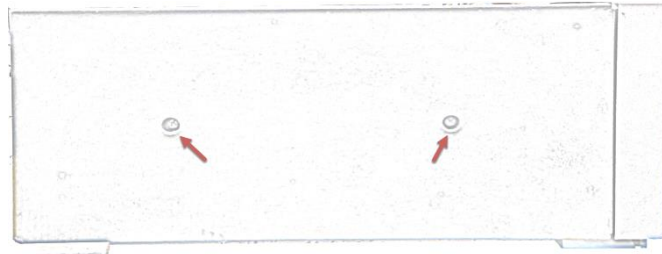
Do not touch any components on the circuit boards. Touch the circuit boards only at the edges.

Installation

1. The device must be switched off and completely disconnected from all cables, especially the 230V power cable.
2. Place the B760 in front of you with the back facing forward and the feet facing down. Now look at the B760 from behind and loosen the two black screws at the top of the device and then lift off the top metal cover. The device is then open at the top.



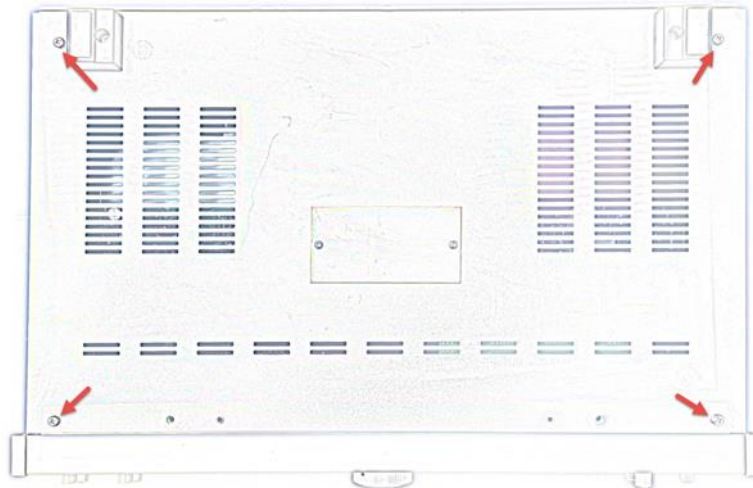
3. Loosen the two black screws on both sides (left and right) and remove the side panels. Carefully lay them down so that they do not rest on the Nextel. Nextel is the velvety gray coating that should not be scratched.



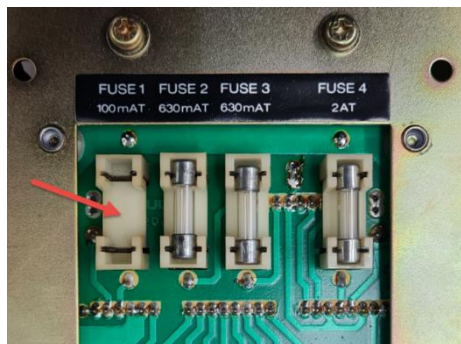
4. Now turn the device upside down and make sure that the front of the device is facing you. Loosen the two screws on the long baseboard at the front of the device and remove this baseboard. The two screws on this baseboard are longer than the other screws, take this into account when fitting the baseboard.



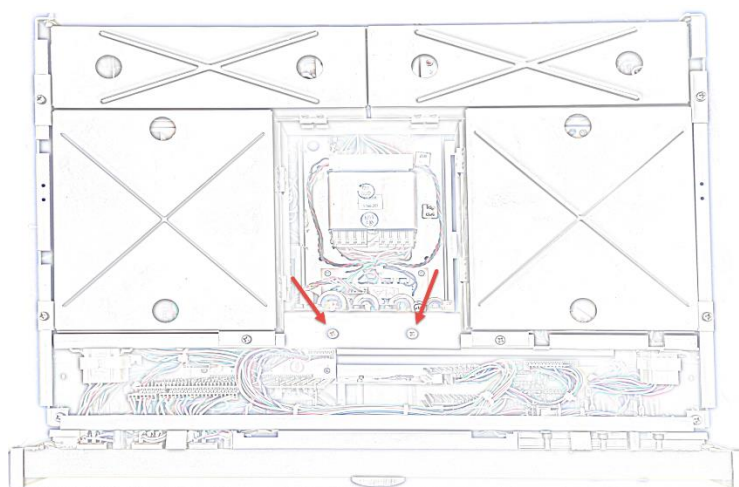
5. Now loosen the 4 screws of the base and also the one black screw that secures the base from behind. Once all 5 screws have been removed, the base can be lifted off.



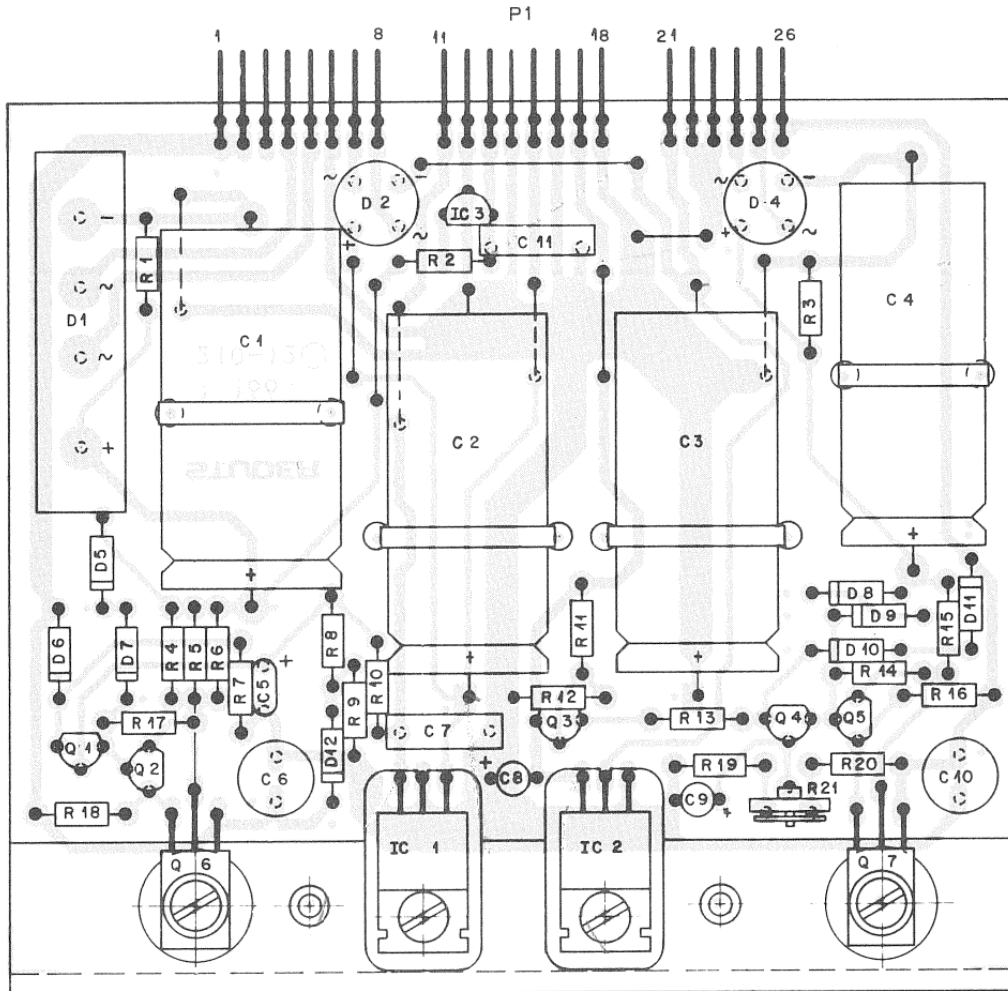
6. You can already remove the miniature fuse F1 now, as this power supply is no longer used. Replace all three other miniature fuses FUSE 2, FUSE 3 and FUSE 4 with the new miniature fuses supplied.



7. Now turn the device again so that the front is facing you and the feet, which are currently removed, are facing downwards. Unscrew the 2 screws from the power supply board and carefully pull it out of the slot.



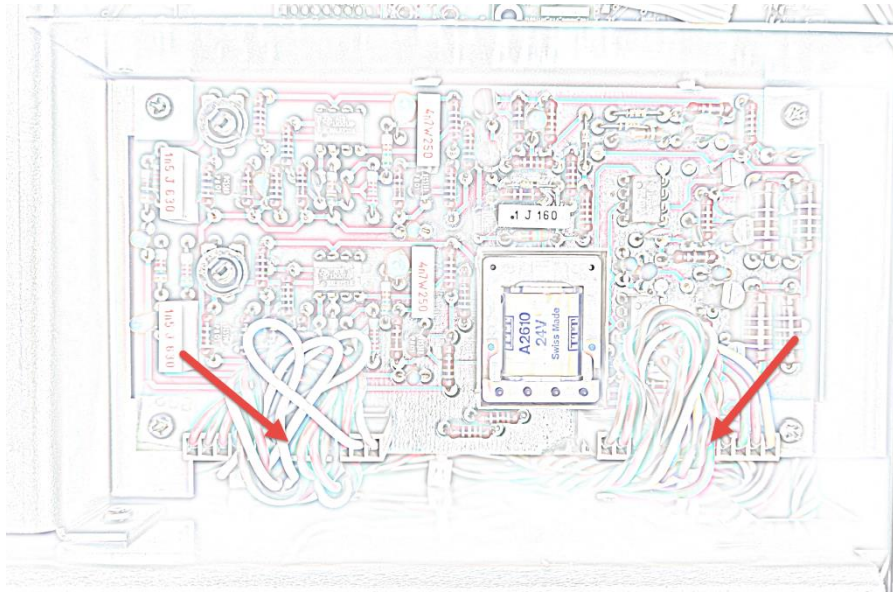
8. Please note that there are two different generations of power supply units. However, these differ only minimally. Here is the illustration of the newer generation.



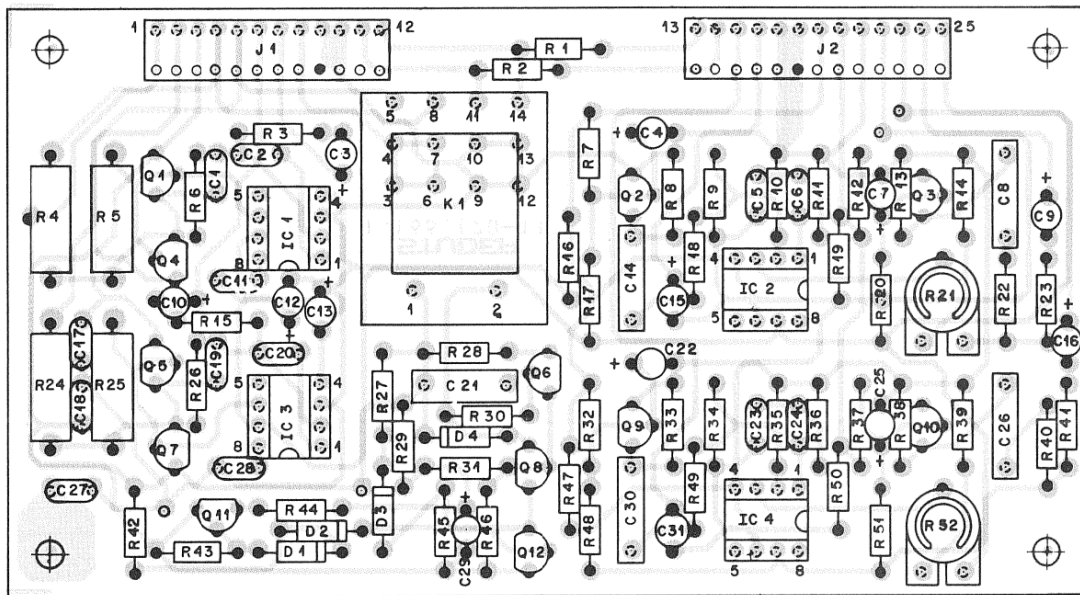
1.166.210-81

9. Replace all electrolytic capacitors and the three rectifiers. One of the rectifiers is not needed, nor is one of the large charging capacitors. However, do not leave the circuit board half-revised, replace all the enclosed components. If C5 is not an electrolytic capacitor, replace it anyway with the 22uF electrolytic capacitor supplied. This was an original improvement from ReVox AG. Depending on the power supply unit, an electrolytic capacitor may be left over.
10. Please make sure that you also fasten the cable ties around the 4 large charging capacitors so that they are firmly attached to the circuit board. Due to the greater weight than the small components, there is too much strain on the solder joint. This must be prevented with the cable ties.
11. Reinstall the power supply board, making sure that all pins are correctly seated in the socket. Screw the two fixing screws back in.

12. Now turn the device over so that the bottom part is facing upwards and the front is facing you. You will see the "Audio Section" circuit board on the front right.



13. First loosen the two "red arrow" plugs and then the 4 screws. You can now remove this circuit board from the device.
14. Replace all electrolytic and tantalum capacitors. The relay should also be replaced. This is a double circuit board. Use a desoldering pump to desolder the components from the board, this way you will damage the tracks on the board much less. These do not tolerate too much heat, which happens very quickly with desoldering braid.

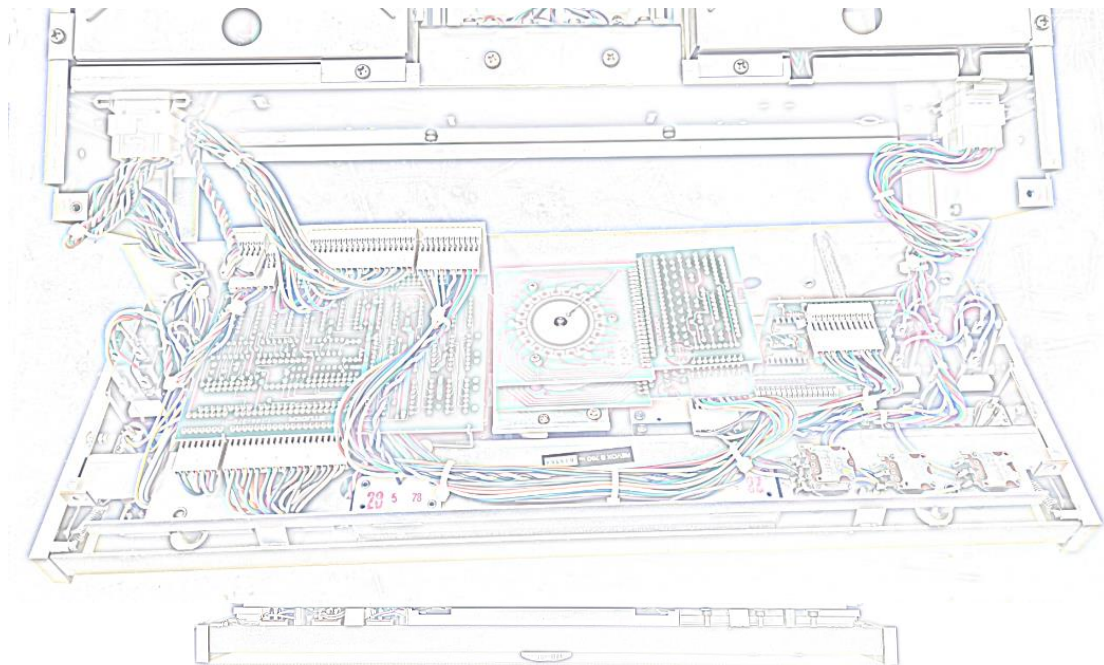


15. Once all components have been replaced, place the circuit board back in the B760, screw it tight and reinsert the two plugs. Make sure that the plugs are correctly inserted into the sockets.
16. Now turn the device back over so that the front is facing you and the upper part is facing upwards.
17. At the back of the device, behind the transformer, you will see the mains voltage selector switch. A mains interference suppression capacitor is soldered above this. This must be replaced, as these tend to go up in smoke, flames and an extreme stench. Unsolder it but remember exactly which pins it was soldered to. If necessary, take a photo of it before. Solder the enclosed mains suppression capacitor in its place.

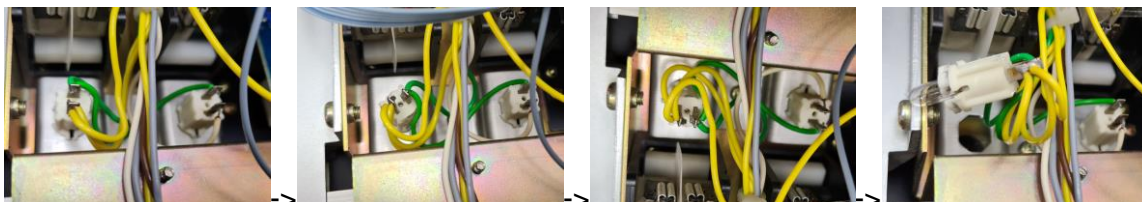


18. Once this has been done, all the bulbs in the front of the device should be replaced. To do this, loosen the two screws on the front left and right from the top.

19. Carefully pull the entire front forwards a few centimetres and tilt it forwards. Do not detach any cables!



20. The 4 signal lamps can be easily replaced from behind. To do this, carefully turn the lamp base by 90° and remove the base from the sheet metal. Replace the lamp and reattach the base by turning it 90° in the opposite direction. Here are the pictures of a single lamp as an illustration.



21. You install the two illumination lamps for the pointer instruments when you install the DAB conversion kit. The installation instructions will point this out to you.

22. Now reattach the front with the two screws from the top on the far left and right.

23. Now fasten the base plate with the 4 screws from below and the one black screw from behind.
Then attach the base to the device with the two long screws.
24. Now place the cover on the device and secure it with the two screws from behind.
25. Now attach the two side panels with two screws each.
26. The revision kit is now installed and the device is ready for the DAB conversion.